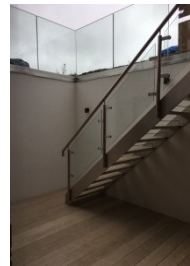




**callingham**  
architects

# Barn Conversion

## Beausale, Warwick



### Amazing Barn Conversion with Basement

How do you create three floors of accommodation into a 1.5 storey high barn in Green Belt?

This was the challenge presented to us for this unique barn conversion on a prominent site in Warwickshire.

The original barn was suspended on a steel frame whilst a 5m deep reinforced concrete basement was formed. The barn was then joined onto the new structure, maintaining the rules of a strict permission of converting an existing barn to a dwelling.

The south facing light well is constructed using frameless balustrading and the effect on the basement rooms is of a light and high quality space, far removed from the poor living experience of traditional basements.

The interior is open plan and flexible with an open staircase throughout the central core of the building. ASHP renewable energy generation and a heat recovery system was also installed to make this unique home an uplifting place to live.

[www.callingham.co](http://www.callingham.co)

Callingham Associates Ltd | Registered in England & Wales 5682933 | 02476 713 872

### Overview

**Construction Value:**  
£550,000

**Client:**  
Private Client

**Developer:**  
Private Developer

**Timeframe:**  
Oct 2016 – Jul 2017